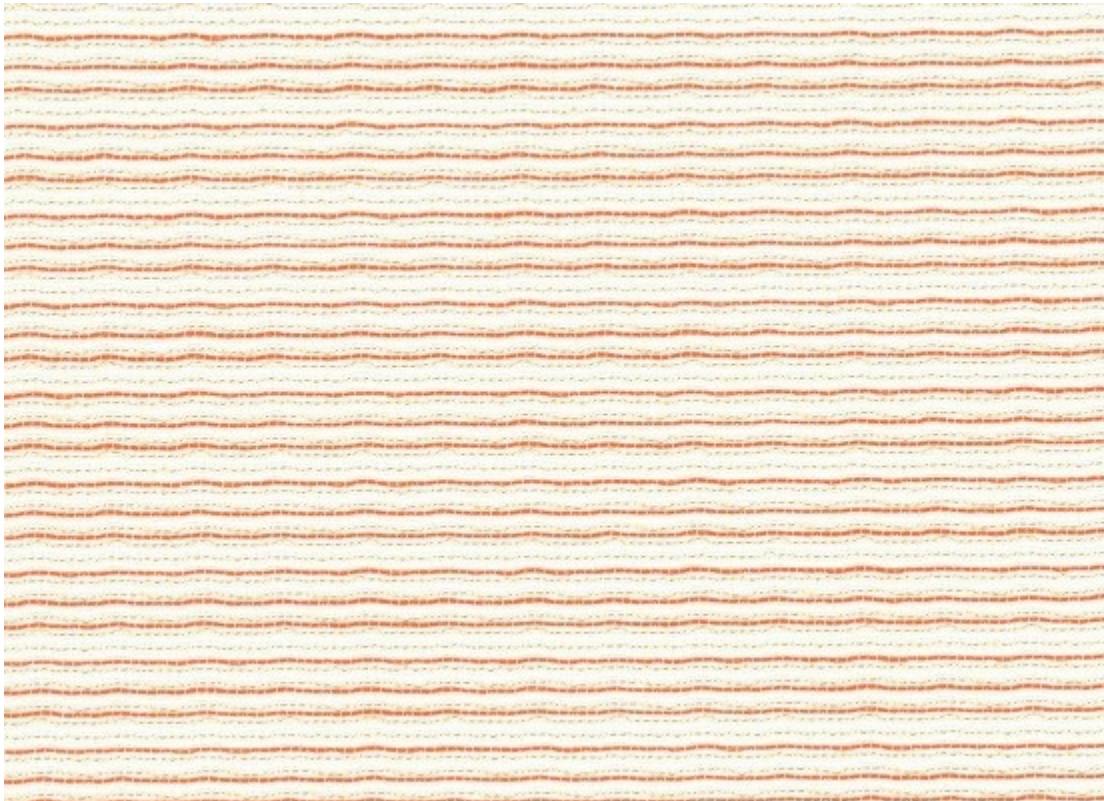


Spec Sheet

Width = 118"
Repeat = N/A
Content = 100% Solution Dyed Acrylic
Abrasion = N/A
Cleaning = Machine Wash / Bleach Cleanable
Lightfastness = 2,500 Hours
Railroaded = Yes
Flamecode = NFPA 701 w/ treatment
Type = Sheer
Design = Stripes
Colorway = Orange / Rust
Wide / Narrow = Wide
Collections = Sol Collection



REID WITLIN LTD.
11968 CHALLENGER COURT MOORPARK, CA 93021
TEL: 818-701-7900 FAX: 818-701-7901 EMAIL: INFO@RWLTD.COM
RWLTD.COM