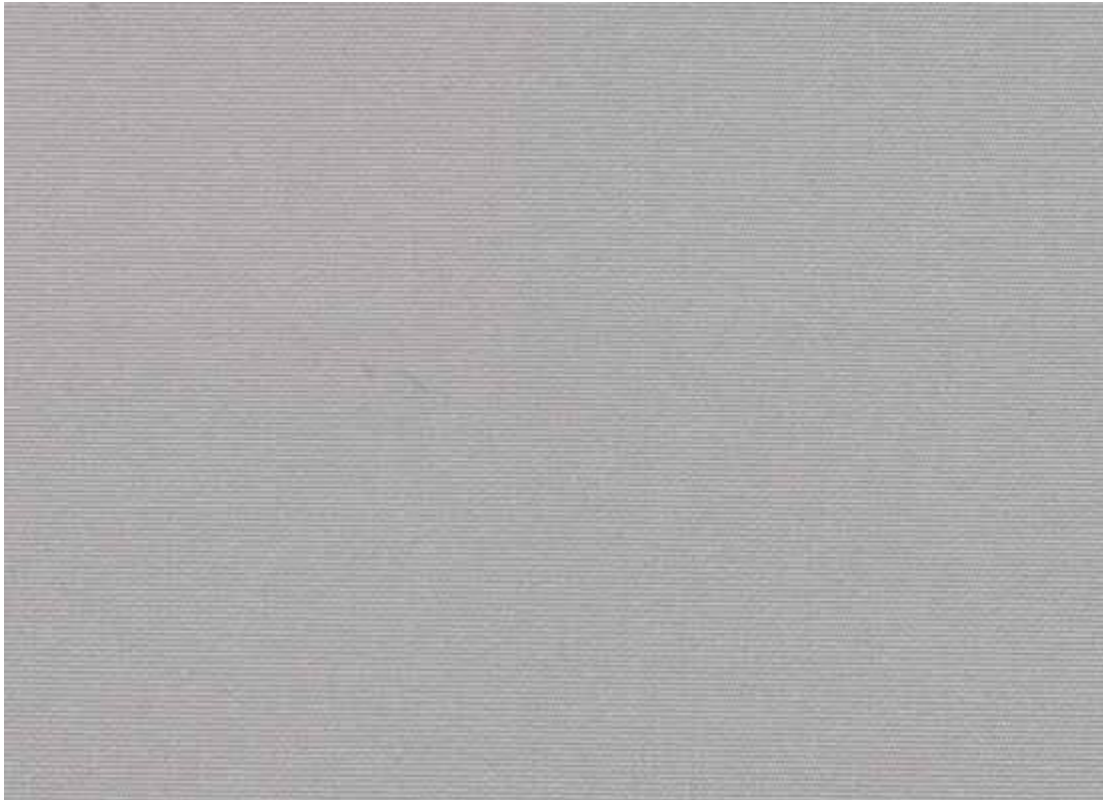


Sun Of A Gun Cashew



Spec Sheet

Width = 54"
Repeat = N/A
Content = 100% Solution Dyed Acrylic
Abrasion = 15,000
Cleaning = Spot Clean
Lightfastness = 5,000 Hours
Railroaded = No
Flamecode = CAL 117-2013 NFPA 260
Type = Upholstery
Design = Solid
Colorway = Gray / Silver
Wide / Narrow = Narrow



REID WITLIN LTD.
11968 CHALLENGER COURT MOORPARK, CA 93021
TEL: 818-701-7900 FAX: 818-701-7901 EMAIL: INFO@RWLTD.COM
RWLTD.COM