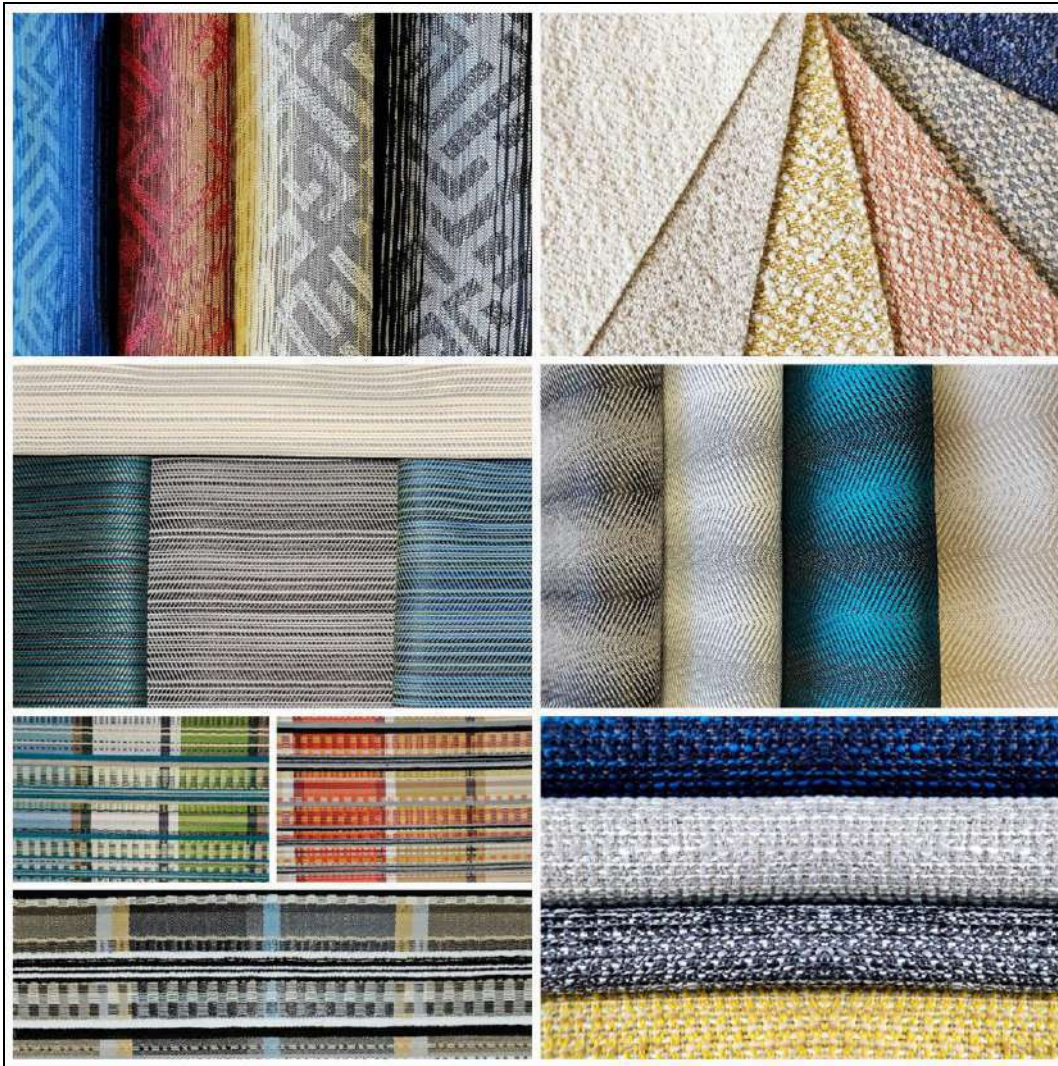


REID WITLIN LTD

INDOOR - OUTDOOR

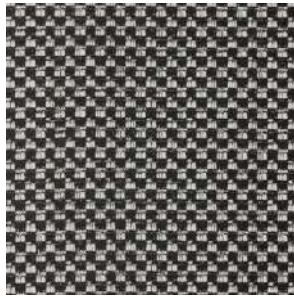
- Certified Woman Owned Business -



FUN IN THE SUN COLLECTION

REID WITLIN LTD.
11968 CHALLENGER COURT MOORPARK, CA 93021
TEL: 818-701-7900 FAX: 818-701-7901 EMAIL: INFO@RWLTD.COM
RWLTD.COM

PATTERN: SUN SPOT



Pepper & Salt



Studio Clay

SPECIFICATIONS

WIDTH: 54"
REPEAT: H: 0.39" x V: 0.35"
CONTENT: 100% SOLUTION-DYED HIGH UV POLYESTER
ABRASION: 50,000
FLAME CODE: NFPA 260, CAL 117-2013, UFAC CLASS 1, IMO
BACKING: OPTIONAL / ADDITIONAL
FINISH: STAIN & SOIL RESISTANT FINISH
CLEANING CODE: W/S - BLEACH CLEANABLE 2:1
LIGHTFASTNESS: CLASS 5, 1,500 UV HOURS, 3 YEAR WARRANTY



REID WITLIN LTD
11968 CHALLENGER COURT
MOORPARK, CA 93021
PH: 818-701-7900 FAX: 818-701-7901
EMAIL: SAMPLES@RWLTD.COM
RWLTD.COM

PATTERN: SUNBEAM



Bermudian Blue



Catwalk



Cherry Cola



Kindling

SPECIFICATIONS

WIDTH: 54"
REPEAT: H: 7.36" x V: 9.5"
CONTENT: 100% SOLUTION-DYED HIGH UV POLYESTER
ABRASION: 50,000
FLAME CODE: NFPA 260, CAL 117-2013, UFAC CLASS 1, IMO
BACKING: OPTIONAL / ADDITIONAL
FINISH: STAIN & SOIL RESISTANT FINISH
CLEANING CODE: W/S - BLEACH CLEANABLE 2:1
LIGHTFASTNESS: CLASS 5, 1,500 UV HOURS, 3 YEAR WARRANTY



REID WITLIN LTD
11968 CHALLENGER COURT
MOORPARK, CA 93021
PH: 818-701-7900 FAX: 818-701-7901
EMAIL: SAMPLES@RWLTD.COM
RWLTD.COM

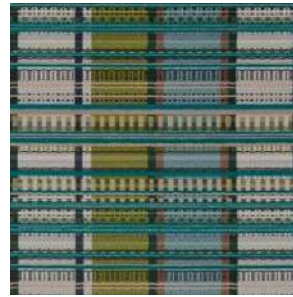
PATTERN: SUNBURST



Orioles



Plum Smoke



Sky High

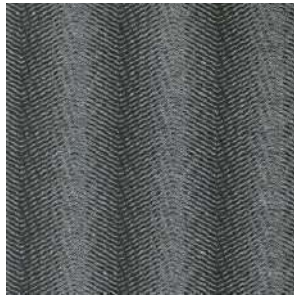
SPECIFICATIONS

WIDTH: 54"
REPEAT: H: 6.5" x V: 5.91"
CONTENT: 100% SOLUTION-DYED HIGH UV POLYESTER
ABRASION: 50,000
FLAME CODE: NFPA 260, CAL 117-2013, UFAC CLASS 1, IMO
BACKING: OPTIONAL / ADDITIONAL
FINISH: STAIN & SOIL RESISTANT FINISH
CLEANING CODE: W/S - BLEACH CLEANABLE 2:1
LIGHTFASTNESS: CLASS 5, 1,500 UV HOURS, 3 YEAR WARRANTY



REID WITLIN LTD
11968 CHALLENGER COURT
MOORPARK, CA 93021
PH: 818-701-7900 FAX: 818-701-7901
EMAIL: SAMPLES@RWLTD.COM
RWLTD.COM

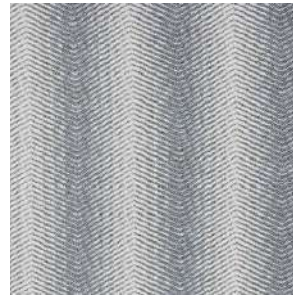
PATTERN: SUNDAES



Catwalk



Ginger Snap



Meteor Shower



Treasured Teal

SPECIFICATIONS

WIDTH: 54"
REPEAT: H: 1.77" x V: 0.19"
CONTENT: 100% SOLUTION-DYED HIGH UV POLYESTER
ABRASION: 57,000
FLAME CODE: NFPA 260, CAL 117-2013, UFAC CLASS 1, IMO
BACKING: OPTIONAL / ADDITIONAL
FINISH: STAIN & SOIL RESISTANT FINISH
CLEANING CODE: W/S - BLEACH CLEANABLE 2:1
LIGHTFASTNESS: CLASS 5, 1,500 UV HOURS, 3 YEAR WARRANTY



PATTERN: SUNDIAL



Crown Jewel



Ginger Sugar



Living Stream



Poppy Seed

SPECIFICATIONS

WIDTH: 54"
REPEAT: H: 2.36" x V: 1.6"
CONTENT: 100% SOLUTION-DYED HIGH UV POLYESTER
ABRASION: 50,000
FLAME CODE: NFPA 260, CAL 117-2013, UFAC CLASS 1, IMO
BACKING: OPTIONAL / ADDITIONAL
FINISH: STAIN & SOIL RESISTANT FINISH
CLEANING CODE: W/S - BLEACH CLEANABLE 2:1
LIGHTFASTNESS: CLASS 5, 1,500 UV HOURS, 3 YEAR WARRANTY

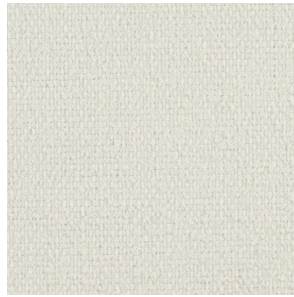


REID WITLIN LTD
11968 CHALLENGER COURT
MOORPARK, CA 93021
PH: 818-701-7900 FAX: 818-701-7901
EMAIL: SAMPLES@RWLTD.COM
RWLTD.COM

PATTERN: SUNDRESS



#1



#2



#3



#5



#6



#9



#10



#12



#13

SPECIFICATIONS

WIDTH: 54"
REPEAT: N/A
CONTENT: 93% RECYCLED HUV SD OLEFIN
7% RECYCLED HUV SD POLYESTER
ABRASION: 50,000
FLAME CODE: NFPA 260, CAL 117-2013, UFAC CLASS 1, IMO
BACKING: OPTIONAL / ADDITIONAL
FINISH: STAIN & SOIL RESISTANT FINISH
CLEANING CODE: W/S - BLEACH CLEANABLE 2:1
LIGHTFASTNESS: CLASS 5, 2,000 UV HOURS, 3 YEAR WARRANTY

PATTERN: SUNDRESS

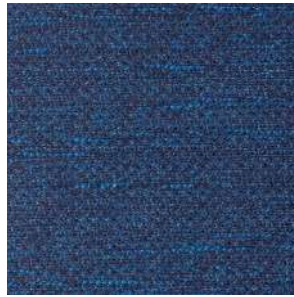


REID WITLIN LTD
11968 CHALLENGER COURT
MOORPARK, CA 93021
PH: 818-701-7900 FAX: 818-701-7901
EMAIL: SAMPLES@RWLTD.COM
RWLTD.COM

PATTERN: SUNLIT



Dark Secret



Shasta Lake



Soft Boiled



Summer Storm

SPECIFICATIONS

WIDTH: 54"
REPEAT: N/A
CONTENT: 100% SOLUTION-DYED HIGH UV POLYESTER
ABRASION: 57,000
FLAME CODE: NFPA 260, CAL 117-2013, UFAC CLASS 1, IMO
BACKING: OPTIONAL / ADDITIONAL
FINISH: STAIN & SOIL RESISTANT FINISH
CLEANING CODE: W/S - BLEACH CLEANABLE 2:1
LIGHTFASTNESS: CLASS 5, 1,500 UV HOURS, 3 YEAR WARRANTY



REID WITLIN LTD
11968 CHALLENGER COURT
MOORPARK, CA 93021
PH: 818-701-7900 FAX: 818-701-7901
EMAIL: SAMPLES@RWLTD.COM
RWLTD.COM

PATTERN: SUNNING



#1



#2



#3



#6

SPECIFICATIONS

WIDTH: 54"
REPEAT: H: 0.60" x V: 0.95"
CONTENT: 79% SOLUTION-DYED HIGH UV POLYESTER, 21% ACRYLIC
ABRASION: 50,000
FLAME CODE: NFPA 260, CAL 117-2013, UFAC CLASS 1
BACKING: OPTIONAL / ADDITIONAL
FINISH: STAIN & SOIL RESISTANT FINISH
CLEANING CODE: W/S - BLEACH CLEANABLE 2:1
LIGHTFASTNESS: CLASS 5, 1,500 UV HOURS, 3 YEAR WARRANTY

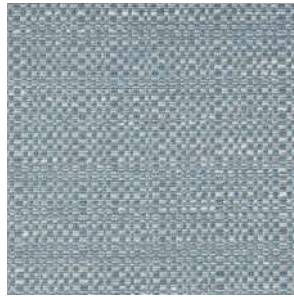


REID WITLIN LTD
11968 CHALLENGER COURT
MOORPARK, CA 93021
PH: 818-701-7900 FAX: 818-701-7901
EMAIL: SAMPLES@RWLTD.COM
RWLTD.COM

PATTERN: SUNROOM



Castle Beige



NYPD



Racetrack



Rare Wood



Turtle Creek

SPECIFICATIONS

WIDTH: 54"
REPEAT: N/A
CONTENT: 100% SOLUTION-DYED HIGH UV POLYESTER
ABRASION: 50,000
FLAME CODE: NFPA 260, CAL 117-2013, UFAC CLASS 1, IMO
BACKING: OPTIONAL / ADDITIONAL
FINISH: STAIN & SOIL RESISTANT FINISH
CLEANING CODE: W/S - BLEACH CLEANABLE 2:1
LIGHTFASTNESS: CLASS 5, 1,500 UV HOURS, 3 YEAR WARRANTY





3-YEAR LIMITED WARRANTY

3-year limited warranty defines and backs our commitment producing and distributing outdoor textiles that guarantee against becoming unserviceable due to:

- Loss of color
- Loss of strength
- Abrasion
- Pilling

From normal usage and exposure conditions, including sunlight, mildew, and atmospheric chemicals when used for appropriate applications.

In the unlikely event that a product does not perform to the above standards, Reid Witlin LTD will resolve the issue for approved claims.

Reid Witlin LTD guarantees to the original purchaser that all products under normal wear and tear conditions will perform in accordance with generally accepted industry standards during single shift operations with proper maintenance using the appropriate cleaning agents and for the purpose intended for a period of three (3) years.

The warranty does not apply to the following:

- Improper use or maintenance.
- Improper storage or handling.
- Installation contrary to instructions or industry standard practices.
- Use of any incompatible adhesives, materials, or tools.
- Any post treatment of the products applied after the purchase.
- Any damages or issues from external reasons unrelated to the product.

About dyes: certain clothing and accessory dyes such as denim jeans may taint lighter colors which is often irreversible. Reid Witlin LTD will not be responsible or liable for any claim related to such dye transfer.



- Certified Woman Owned Business -

Created in 1999, Reid Witlin LTD, a certified Woman Owned Business, has become a leader in the procurement of textiles to the hospitality industry. With installations ranging from Las Vegas to London, Indianapolis to Indonesia and from Montreal to Macau, Reid Witlin LTD has one single mission--to become the number one supplier of textiles to all industries. Reid Witlin LTD supplies a variety of fabrics including upholstery, drapery, indoor/outdoor and bedding items specifically designed for the resorts and hotels, Healthcare, Senior Living and Higher Education Facilities, cruise ship builders, country clubs, casinos and restaurants.

Whether helping to create luxurious interiors for The Cosmopolitan Resort & Casino, Standards for the Hilton Garden Inn brand, the Resort World in Las Vegas or the Wynn at Boston Harbor, Reid Witlin LTD is at the forefront of textile design and service.

Allow Reid Witlin LTD to help you create a perfect environment using hospitality textiles that exceed contract standards, are affordable and will continue to look great and perform well over time.



REID WITLIN LTD.
11968 CHALLENGER COURT MOORPARK, CA 93021
TEL: 818-701-7900 FAX: 818-701-7901 EMAIL: INFO@RWLTD.COM
RWLTD.COM