



- Certified Woman Owned Business -



AFTERNOON DELIGHT COLLECTION

REID WITLIN LTD.
11968 CHALLENGER COURT MOORPARK, CA 93021
TEL: 818-701-7900 FAX: 818-701-7901 EMAIL: INFO@RWLTD.COM
RWLTD.COM

PATTERN: HIDE THE BISHOP



White

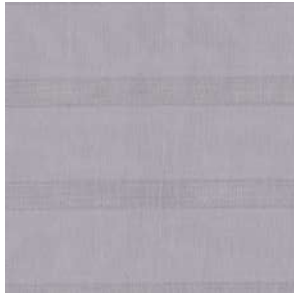
SPECIFICATIONS

WIDTH: 118"
REPEAT: H: 25.1", V: 19.2"
CONTENT: 100% POLYESTER
ABRASION: N/A
FLAME CODE: NFPA 701
BACKING: 100% POLYESTER
FINISH: DOUBLE WASHED
CLEANING CODE: RECOMMEND DRY CLEAN
LIGHTFASTNESS: 4-5 (STANDARD : EN ISO 105 B02)



REID WITLIN LTD
11968 CHALLENGER COURT
MOORPARK, CA 93021
PH: 818-701-7900 FAX: 818-701-7901
EMAIL: SAMPLES@RWLTD.COM
RWLTD.COM

PATTERN: MENAGE TOIS



#604 Stark



#605 Nude



Optic White

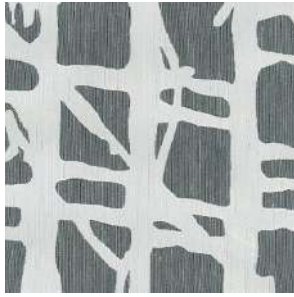
SPECIFICATIONS

WIDTH: 118"
REPEAT: V: 0.14", H: 1.96"
CONTENT: 100% POLYESTER
ABRASION: N/A
FLAME CODE: NFPA 701
BACKING: 100% POLYESTER
FINISH: DOUBLE WASHED
CLEANING CODE: RECOMMEND DRY CLEAN
LIGHTFASTNESS: N/A



REID WITLIN LTD
11968 CHALLENGER COURT
MOORPARK, CA 93021
PH: 818-701-7900 FAX: 818-701-7901
EMAIL: SAMPLES@RWLTD.COM
RWLTD.COM

PATTERN: NEIGHBORS WATCHING



White

SPECIFICATIONS

WIDTH: 118"
REPEAT: H: 25.1", V: 42.2"
CONTENT: 100% POLYESTER
ABRASION: N/A
FLAME CODE: NFPA 701
BACKING: 100% POLYESTER
FINISH: DOUBLE WASHED
CLEANING CODE: RECOMMEND DRY CLEAN
LIGHTFASTNESS: 4-5 (STANDARD : EN ISO 105 B02)

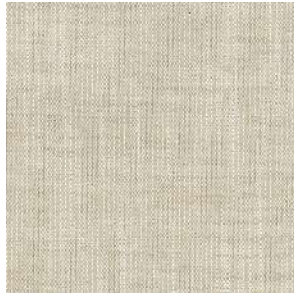


REID WITLIN LTD
11968 CHALLENGER COURT
MOORPARK, CA 93021
PH: 818-701-7900 FAX: 818-701-7901
EMAIL: SAMPLES@RWLTD.COM
RWLTD.COM

PATTERN: NOONER



Crow



Linen



Quail

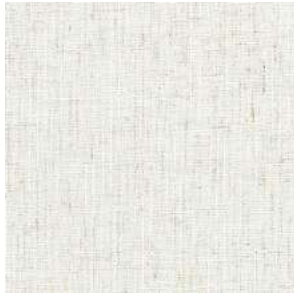
SPECIFICATIONS

WIDTH: 57"
REPEAT: N/A
CONTENT: 100% POLYESTER
ABRASION: 35,000
FLAME CODE: NFPA 701
BACKING: 100% POLYESTER
FINISH: N/A
CLEANING CODE: W
LIGHTFASTNESS: CLASS 4



REID WITLIN LTD
11968 CHALLENGER COURT
MOORPARK, CA 93021
PH: 818-701-7900 FAX: 818-701-7901
EMAIL: SAMPLES@RWLTD.COM
RWLTD.COM

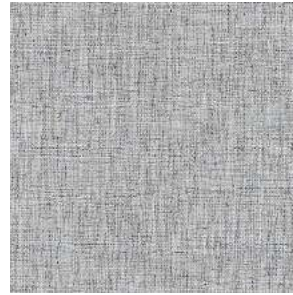
PATTERN: PILLOW TALK



#2 Linen



#5 Fawn



#16 Midnight



#19 Sky



#23 Dawn



#25 Dusk



#28 Charcoal

SPECIFICATIONS

WIDTH: 54" / 110"
REPEAT: N/A
CONTENT: 100% POLYESTER
ABRASION: N/A
FLAME CODE: NFPA 701
BACKING: 100% POLYESTER
FINISH: 3 PASS BLACKOUT
CLEANING CODE: MACHINE WASHABLE
LIGHTFASTNESS: 100 HOURS

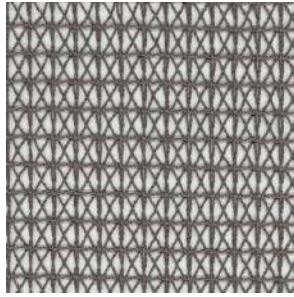


REID WITLIN LTD
11968 CHALLENGER COURT
MOORPARK, CA 93021
PH: 818-701-7900 FAX: 818-701-7901
EMAIL: SAMPLES@RWLTD.COM
RWLTD.COM

PATTERN: RENDEZVOUS



Crochet



Dresden



Munich

SPECIFICATIONS

WIDTH: 120"
REPEAT: H: 0.47" V: 0.39"
CONTENT: 100% POLYESTER
ABRASION: N/A
FLAME CODE: NFPA 701
BACKING: 100% POLYESTER
FINISH: N/A
CLEANING CODE: MACHINE WASHABLE
LIGHTFASTNESS: 100 HOURS



REID WITLIN LTD
11968 CHALLENGER COURT
MOORPARK, CA 93021
PH: 818-701-7900 FAX: 818-701-7901
EMAIL: SAMPLES@RWLTD.COM
RWLTD.COM

PATTERN: SEX ON THE BEACH



Latte



Silver



Stone



Winter

SPECIFICATIONS

WIDTH: 54"
REPEAT: N/A
CONTENT: 100% POLYESTER
ABRASION: N/A
FLAME CODE: NFPA 701
BACKING: 100% POLYESTER
FINISH: N/A
CLEANING CODE: RECOMMEND DRY CLEAN
LIGHTFASTNESS: N/A

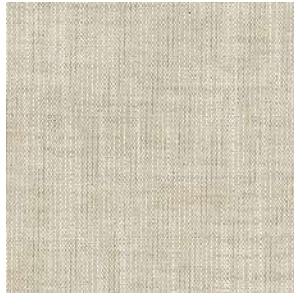


REID WITLIN LTD
11968 CHALLENGER COURT
MOORPARK, CA 93021
PH: 818-701-7900 FAX: 818-701-7901
EMAIL: SAMPLES@RWLTD.COM
RWLTD.COM

PATTERN: SEXUAL HEALING



Barley



Linen



Slate

SPECIFICATIONS

WIDTH: 57"
REPEAT: N/A
CONTENT: 100% POLYESTER
ABRASION: 100,000
FLAME CODE: NFPA 701
BACKING: 100% POLYESTER
FINISH: N/A
CLEANING CODE: W
LIGHTFASTNESS: CLASS 4



REID WITLIN LTD
11968 CHALLENGER COURT
MOORPARK, CA 93021
PH: 818-701-7900 FAX: 818-701-7901
EMAIL: SAMPLES@RWLTD.COM
RWLTD.COM

PATTERN: SEXY SADIE



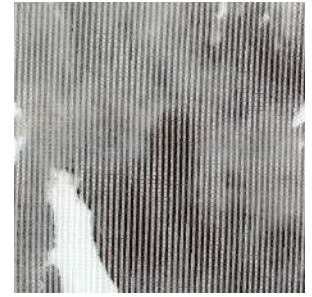
Climax



Cloud 9



Explode



Turn On



Wet Dream



SPECIFICATIONS

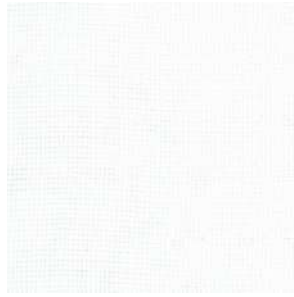
WIDTH: 118"
REPEAT: H: 33", V: 27.55"
CONTENT: 100% POLYESTER
ABRASION: N/A
FLAME CODE: NFPA 701
BACKING: 100% POLYESTER
FINISH: WASH & HEAT SET
CLEANING CODE: MACHINE WASHABLE
LIGHTFASTNESS: 4-5 (STANDARD : EN ISO 105 B02)

REID WITLIN LTD
11968 CHALLENGER COURT
MOORPARK, CA 93021
PH: 818-701-7900 FAX: 818-701-7901
EMAIL: SAMPLES@RWLTD.COM
RWLTD.COM

PATTERN: SHAKE THE SHEETS



Bare



Naked



Nude



Skin



Stark



SPECIFICATIONS

WIDTH: 118"
REPEAT: N/A
CONTENT: 100% POLYESTER
ABRASION: N/A
FLAME CODE: NFPA 701
BACKING: 100% POLYESTER
FINISH: WASH & HEAT SET
CLEANING CODE: MACHINE WASHABLE
LIGHTFASTNESS: 4-5 (STANDARD : EN ISO 105 B02)

REID WITLIN LTD
11968 CHALLENGER COURT
MOORPARK, CA 93021
PH: 818-701-7900 FAX: 818-701-7901
EMAIL: SAMPLES@RWLTD.COM
RWLTD.COM

PATTERN: STANDING TALL



#602 White



#603 Ivory



#604 Grey



#606 Water



#608 Fawn



SPECIFICATIONS

WIDTH: 118"
REPEAT: V: 7.72", H: 2.62"
CONTENT: 100% POLYESTER
ABRASION: N/A
FLAME CODE: NFPA 701
BACKING: 100% POLYESTER
FINISH: DOUBLE WASHED
CLEANING CODE: RECOMMEND DRY CLEAN
LIGHTFASTNESS: N/A

REID WITLIN LTD
11968 CHALLENGER COURT
MOORPARK, CA 93021
PH: 818-701-7900 FAX: 818-701-7901
EMAIL: SAMPLES@RWLTD.COM
RWLTD.COM



Created in 1999, Reid Witlin LTD has become a leader in the procurement of textiles to the hospitality industry. With installations ranging from Las Vegas to London, Indianapolis to Indonesia and from Montreal to Macau, Reid Witlin LTD has one single mission--to become the number one supplier of textiles to all industries. Reid Witlin LTD supplies a variety of fabrics including upholstery, drapery, indoor/outdoor and bedding items specifically designed for the resorts and hotels, Healthcare, Senior Living and Higher Education Facilities, cruise ship builders, country clubs, casinos and restaurants.

Whether helping to create luxurious interiors for The Cosmopolitan Resort & Casino, Standards for the Hilton Garden Inn brand, the Resort World in Las Vegas or the Wynn at Boston Harbor, Reid Witlin LTD is at the forefront of textile design and service.

Allow Reid Witlin LTD to help you create a perfect environment using hospitality textiles that exceed contract standards, are affordable and will continue to look great and perform well over time.



REID WITLIN LTD.
11968 CHALLENGER COURT MOORPARK, CA 93021
TEL: 818-701-7900 FAX: 818-701-7901 EMAIL: INFO@RWLTD.COM
RWLTD.COM