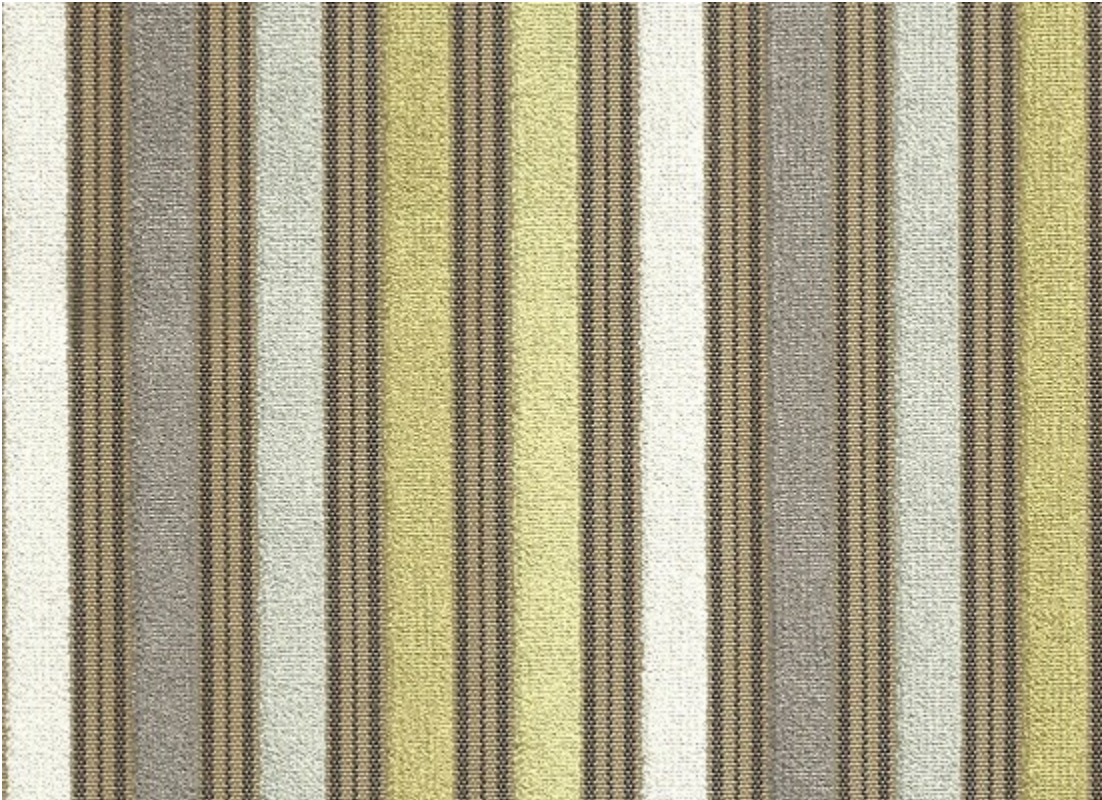


# Candy Striper 34

## Spec Sheet

Width = 55"  
Repeat = H 5"  
Content = 60% Viscose 40% Polyester  
Abrasion = 65,000  
Cleaning = Recommended Dry Clean  
Lightfastness = N/A  
Railroaded = No  
Flamecode = NFPA 260 CAL 117-2013  
Type = Upholstery  
Design = Stripes  
Colorway = Gray / Silver  
Wide / Narrow = Narrow



REID WITLIN LTD.  
11968 CHALLENGER COURT MOORPARK, CA 93021  
TEL: 818-701-7900 FAX: 818-701-7901 EMAIL: INFO@RWLTD.COM  
RWLTD.COM